

# Leaving a legacy to Surrey Care Trust



**Surrey Care Trust supports some of the most  
vulnerable and socially marginalised people in Surrey**

**[www.surreycaretrust.org.uk](http://www.surreycaretrust.org.uk)**

# What will your legacy be?

Surrey Care Trust supports some of the most vulnerable and socially marginalised people in Surrey – those from low-income families, troubled young people and unskilled adults – to give them the confidence and self-belief, skills and education, aspirations and opportunities to create better lives for themselves and their families.

We do this by listening to our communities' needs and by harnessing the energy, skills, and experience of over 500 trained volunteers and our expert staff. Together, we deliver an innovative range of services including mentoring, skills training, alternative education and community based projects to prevent problems spiralling, and help people to create brighter futures.

Each year Surrey Care Trust works with thousands of people, at a cost of over £1.5m, to help them to gain qualifications, to be better parents, to find employment and to make a positive contribution to society. This is our legacy.



**"I have found a job and I'm waiting on a start date. I just want to say 'thank you' for the helping hand, not just for help looking for work but to have a chat and all your support."**

Steps2Work client



**“Now that I’m retired, I still want to make an impact, I don’t want to be defined by what I did, but what I do. This is my legacy, it’s part of who I am.”**

John Chaplin, Chairman, Surrey Care Trust

When I was a young man, I was able to be part of something that helped me develop the life skills I found useful later on in life. As I grew older, I began to think more about what I can contribute to help others who have not had the same opportunities in life as I have been fortunate to have. Then I found Surrey Care Trust – a charity with a strong community focus, but large enough to be responsive and effective and I wanted to be part of it.

Many of the people who turn to us have been told they’re failures, often from a very young age. They have checked out of education or employment, irrespective of their potential, and they just don’t know a way out of their situation. The human and societal cost is just staggering.

I have seen first-hand the difference the Trust can make. Together, staff and volunteers work with their clients to challenge them, to get them to view things from different perspectives, to make their own decisions. It is wonderful to see people bloom when previously they felt that they were trapped by bad decisions, lack of opportunity and withering self-belief.

This vital work needs to continue, long after I am gone, and that’s why I have left a gift in my Will to Surrey Care Trust.

John Chaplin  
Chairman, Surrey Care Trust

# Ensuring your legacy lives on

Leaving a gift in your Will to Surrey Care Trust, after first providing for loved ones, ensures that your support continues to have a lasting impact and help to change even more lives.

**"I have to say (my counsellor) was amazing to work with and I felt better after each chat due to her professionalism and kindness. I can't recommend these guys enough if there is something you need to get off your chest. That's the most important thing - to know someone is listening."**

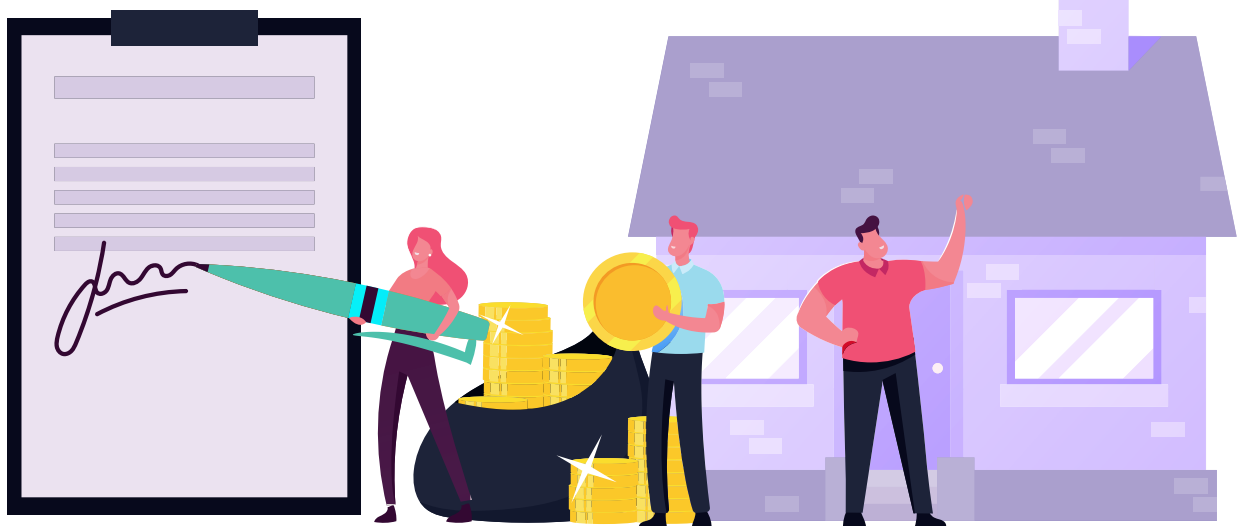
Counselling client

## Leaving a gift in your Will

If you decide to leave a gift for Surrey Care Trust, we advise that you first consult with a solicitor to ensure that your Will fully reflects your intentions.

Remember, if your estate is subject to inheritance tax your charitable donation will either be taken off the value of your estate before Inheritance Tax is calculated

Or reduce the Inheritance Tax rate from 40% to 36%, if more than 10% of your net estate is left to charity.



# Three steps to leaving a legacy to Surrey Care Trust

## 1. Decide what type of gift you would like to leave to the Trust:

### A Residuary Gift:

The remainder of your estate, or a percentage of it. This type of gift has the added benefit of keeping its value over time.



### A Pecuniary Gift:

A specific amount of money or a valuable saleable item, like a piece of jewellery or furniture. Remember, no gift is too small, we appreciate all and every form of support.



## 2. Write a new will or, if you've already made your will and want to add Surrey Care Trust to it, you could execute a codicil.

### Our Details:

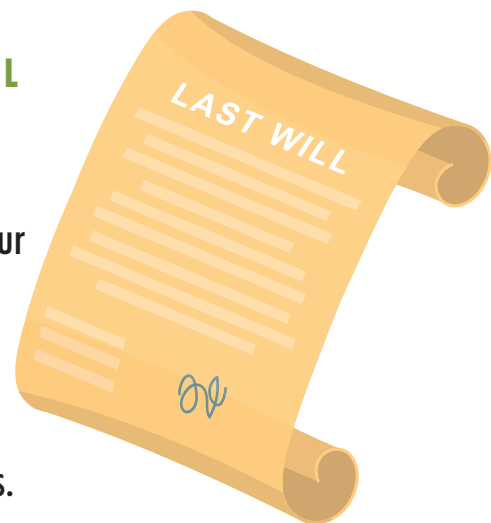
**Surrey Care Trust**

**FF12 Astolat, Coniers Way, Guildford, Surrey GU4 7HL**

**Registered charity 285543**

## 3. Let us know of your intentions, so that we can keep you updated on our work and our plans for the future that your gift will be supporting.

Leaving a gift to charity in your will is a big decision and we always advise you take independent legal advice before making any changes.



**There are a variety of organisations who can help, two of which are:**

**Local Solicitors and Surrey Care Trust's Legacy Partner Morr&Co:**

**[www.morrlaw.com](http://www.morrlaw.com)**

**Online will provider Kwill:**

**[www.kwil.co.uk/affiliate?partner=SurreyCareTrust](http://www.kwil.co.uk/affiliate?partner=SurreyCareTrust)**



**“Tyler is like a changed boy since he has been meeting his mentor. I cannot thank you enough for your support...the match you made with a mentor was perfect. I cannot speak highly enough about the programme and the difference it has made. Tyler really looks forward to meeting his mentor and always come back with a real BUZZ and, as he wasn't going out at all, this is real progress. Thank you so much.”**

Parent of a young person receiving mentoring support

**To discuss leaving a legacy to  
Surrey Care Trust contact:  
Rachel Perez-Lofty on  
07526 128044 or email at  
[Rachel.perez-lofty@surreycaretrust.org.uk](mailto:Rachel.perez-lofty@surreycaretrust.org.uk)**

**[www.surreycaretrust.org.uk](http://www.surreycaretrust.org.uk)**

Supported by:

**MORR  
& CO**  
Solicitors

**SURREY  
CARE  
TRUST**

Nurturing skills | Changing lives

**[surreycaretrust.org.uk](http://surreycaretrust.org.uk)**

Registered charity 285543

Company limited by guarantee under number 01658859

FF12 Astolat | Coniers Way | Guildford | Surrey | GU4 7HL

01483 426990